

The Welcome Swallow Gallery

Outrageous Plants

The Wickison Showcase



Catalogue

17th January – February 28th 2025



Friends of Welcome Swallow

Exhibition Sponsors

~ **Outrageous Plants** ~

The *Welcome Swallow Gallery* is both proud and excited to present a new exhibition showcase, *Outrageous Plants* that features the work of **Sue Wickison**, one of the world's foremost exponents of botanical illustration.

The combination of art and science upon which her exhibition compositions are anchored comes from the genre that the gallery has already explored in 2022 with the exhibition *Botanica* that was presented with the Botanical Arts Society of New Zealand (BASNZ).

The basic difference between a botanical artist and a flower painter is intention: the botanical artist produces work useful to science. In this exhibition each painting is botanically accurate, often displaying roots, seeds and buds as well as flowers and leaves.

Sue Wickison has spent a life time involved in rigorous and indeed vigorous research and exploration that has taken her many times across the globe. Quite simply, her botanical knowledge in the art world is without parallel. Her recent travels to the United Arab Emirates that included the Empty Quarter in

Abu Dhabi, the deserts in Sharjah, and then to the remote mountain areas in Oman, enabled her to observe heritage varieties of plants that have been grown for generations. Observation and painting of plants in their natural environment ensured a level of accuracy and attention to detail that led to a portfolio that now represents the *Plants of the Qur'an*.

This comprehensive art project captured vital canonical history and culture and was installed at *Kew Gardens in 2023; a five-month solo exhibition* that received global coverage and was subsequently seen by over a million visitors.

For her showcase at *Welcome Swallow*, we are being treated to several magnificent renditions of the *Cobra Lily*, sometimes referred to as the "Jack-in-the-Pulpit" plant, alongside stunning detailed graphite and ink on linen compositions. We also encounter the *Devil's Tongue*, a *String of Hearts*, not to mention *Mouse Plants* and for good measure a foraging Tui. In all senses, this is an outrageously stunning showcase. Buckle up.

ACCCT Board, January 2025

1.



Sue Wickison

The Devil's Tongue

Amorphophallus konjac

Watercolour

1290x840mm

Price: \$19,500

2.



Sue Wickison

Seed Pods

Tacca chantrieri

Watercolour

725x570mm

Price: \$8000

3.



Sue Wickison

String of Hearts

Ceropegia woodii

Watercolour

915x700mm

Price: \$9500

4.



Sue Wickison

Cobra Lily

Arisaema fargesii

Watercolour

1340x710mm

Price: \$21,500

5.



Sue Wickison

Cobra Lily, *Arisaema ringens*

Watercolour

720x720mm

Price: \$7800



6.

7.



Sue Wickison

Cobra Lily

Arisaema franchetianum

Watercolour

830x600mm

Price: \$7900

Sue Wickison

Cobra Lily

Arisaema sikokianum

Watercolour

940x635mm

Price: \$8500

8.



Sue Wickison

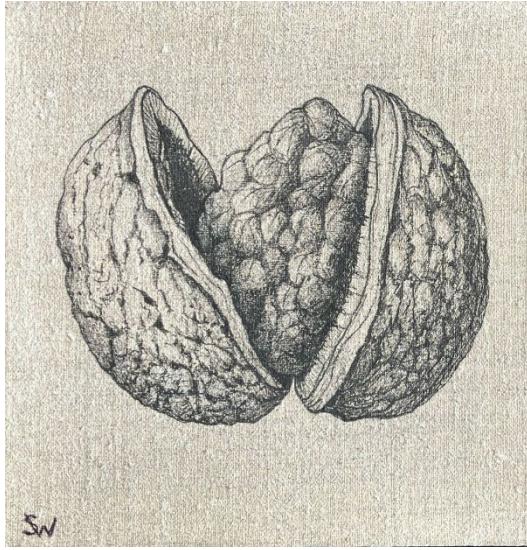
Mouse Plant, *Arisarum proboscideum*

Watercolour

1340x710mm

Price: \$14,500

9.



Sue Wickison

Brain Power

Ink on Belgian Linen

190x190mm

Price: \$600

10.



Sue Wickison

Bean Counter

Ink on Belgian Linen

190x190mm

Price: \$600

11.



Sue Wickison

Night Vision

Ink on Belgian Linen

190x190mm

Price: \$600

12.



Sue Wickison

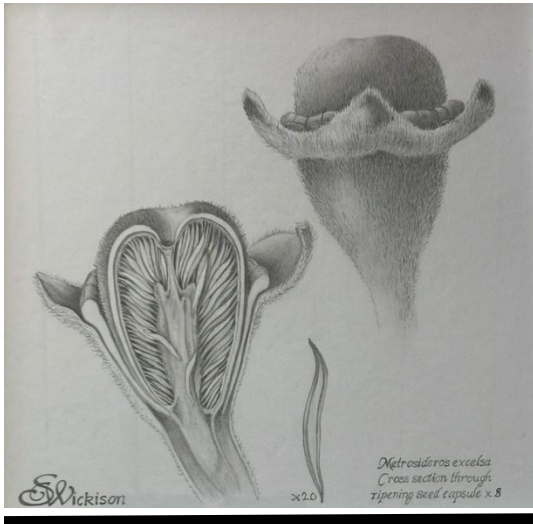
Bold as Brassica

Ink on Belgian Linen

190x190mm

Price: \$600

13.



Sue Wickison

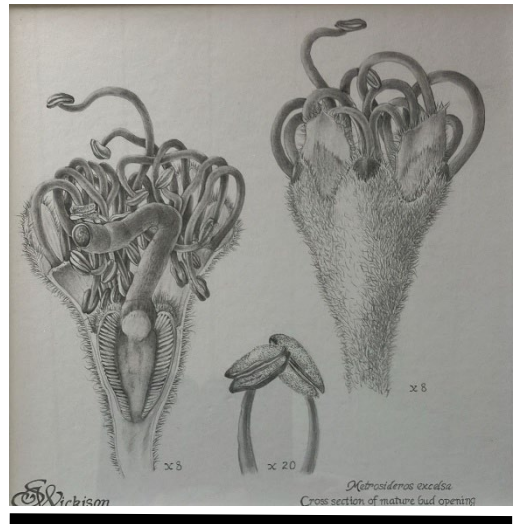
Pohutukawa Study I

Graphite

195x195mm

Price: \$1950

14.



Sue Wickison

Pohutukawa Study II

Graphite

195x195mm

Price: \$1950

16.



15.

Sue Wickison

Cobra Lily (showing stages of painting)

Arisaema sikokianum

240x160mm

Price: \$2150



Sue Wickison

Tui

Ink on Belgian Linen

190x190mm

Price: \$600

Sue Wickison BA (Hons) Scientific Illustration

Sue was born and brought up in Sierra Leone, West Africa. Her passion for natural history was nurtured by her father, a teacher, botanist and artist who took her on expeditions locating, identifying and collecting botanical specimens.

Biography

1990 New orchid discovered by Sue Wickison, named in her honour.
Coelogyne susanae, a species of Orchidaceae

- 2024 *Plants of the Qur'an*, Cartwright Hall Art Gallery, solo exhibition
- 2023 *The Jill Smythies Award* for outstanding diagnostic illustrations in botanical art, from the *Linnean Society*
- 2023 *Plants of the Qur'an, History and Culture*, Book Launch
- 2023 *Plants of the Qur'an* exhibition at the Royal Botanic Gardens, Kew, London, a five-months solo show
- 2013 Exhibition at the *Shirley Sherwood Gallery*, Royal Botanic Gardens, Kew
- 2008 *Royal Horticultural Society Show* London, Gold Medalist
- 2007 Solo show *Savill Garden*, Windsor UK
- 2006 Solo show *New Zealand House*, London
- 1986 Winston Churchill Fellowship to travel to the Solomon Islands to collect orchids for Kew Gardens
- 1982-1991 Botanical Illustrator, Kew Gardens
- Over 50 natural history stamp designs for several countries in the Pacific, including New Zealand
- Paintings in the *Shirley Sherwood* and *Isaac Sutton* Collections, the Hunt Institute, Sydney Florilegium, private collections around the world that includes the *British Royal Family*

e-mail welcomeswallow.nz@gmail.com; Tel: 07-858-3964; 378 Grey St. Ham East

YOUTUBE: www.youtube.com/channel/UCrn5EKzvZ7uSmHJP27bciNQ

WEBSITE: www.wsgalleryandgifts.com

FACEBOOK: www.facebook.com/thewelcomeswallow/

INSTAGRAM: www.instagram.com/wsgalleryandgifts/

PLEASE
VISIT